

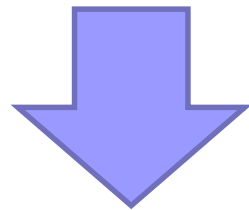
Cyber Security in Medical Field



Naoki Nakashima MD, PhD
Director of Medical Information Center
Vice Director of Telemedicine Development Center of Asia
Assistant Director of Kyushu University Hospital
Vice President of Japan Association for Medical Informatics

Topics Today

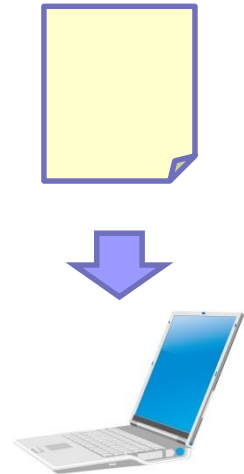
- Growing Motivation to Use Medical Information
- Rapid Progress of Digitalization in Medical Field
- Rapid Growth of Informational Risks by Digitalization



- Importance of Cyber Security for Medical Business
- Cyber Security Framework in Kyushu Univ. Hospital

Rapid Progress of Digitalization in Medical Field in Japan

	2000	2015	2030
■ Reimbursement system with insurers	0%	~100%	100%
■ Medical records in hospital and clinics	0%	~40%	100%
■ Medical images (X-ray, CT, MRI etc)	0%	~40%	100%
■ Information sharing system among hospital and clinics	0%	~5%	100%
■ Information sharing among healthcare or welfare fields	0%	0%	80%~
■ Telemedicine, home medicine	0%	~0%	30%~
■ Communication with patients	0%	~0%	30%~



Growing motivation why we want to use medical Information

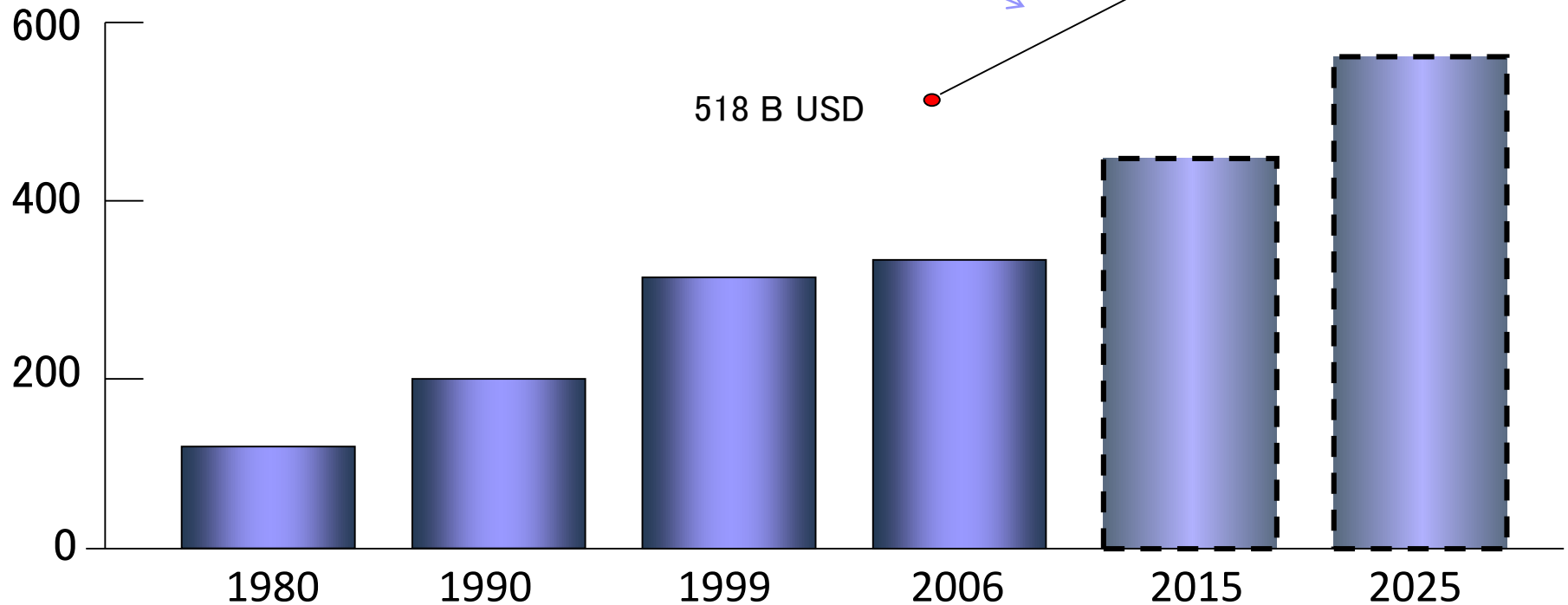
- To improve
 - Medical Quality
 - Medical Safety Management
 - Customer Satisfaction
 - Stress of Medical Staffs
- To create or grow
 - New medicine and medical device
 - New Industry around medical service
- To acquire
 - New knowledge in medical science



Expanding medical / healthcare cost in Japan

Total Healthcare Cost (The New Economic Growth Strategy by METI in 2006)

(billion USD)



Medical Cost (The Estimation of Medical Costs and Reduction Target by MHLW in 2006)

Analysis and quality management are most important issues to control medical / healthcare cost in Japan

The concept of Information as medicine

Information can be medicine!

If the information is provided in a timely & appropriate manner


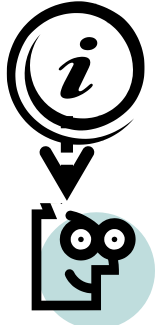
Ordinary medicine (Tablet)	Information as medicine (Info-Medicine)
<p>Appropriate dose provided</p> <p>Function through blood concentration</p> <p>Assayable and stable effect</p> <p>Side effects</p> 	<p>Appropriate information provided</p> <p>Function through change of attitude and daily behavior</p> <p>Assayable by IT, but need to be more stable</p> <p>Side effects (too much diet or exercise)</p> 

Image of Real Time Recommendations with the Info-Medicine Program

During the dinner...

Oh, I forgot to take medicine,



When you are jogging...

Oh, It may be too fast. I should be careful, because I have a heart disease.



Smart Phone



You are eating dinner. Did you take medicine?

Heart rate is too high, slow down !

You've got on the train? How about walking home from the next station?

Your blood sugar is too high. Did you use insulin?

In the train...

Hmm, OK, I will try



When monitoring the blood sugar

Oh my God, I forgot to inject insulin. I should do it now!





Cases of information troubles in medical field

Case 1. "Under anonymity" is truly possible ?

- Researcher:
 - Don't worry because nobody can recombine anonymous data with privacy data in the original DB!
- Patient (research subject):
 - Really?

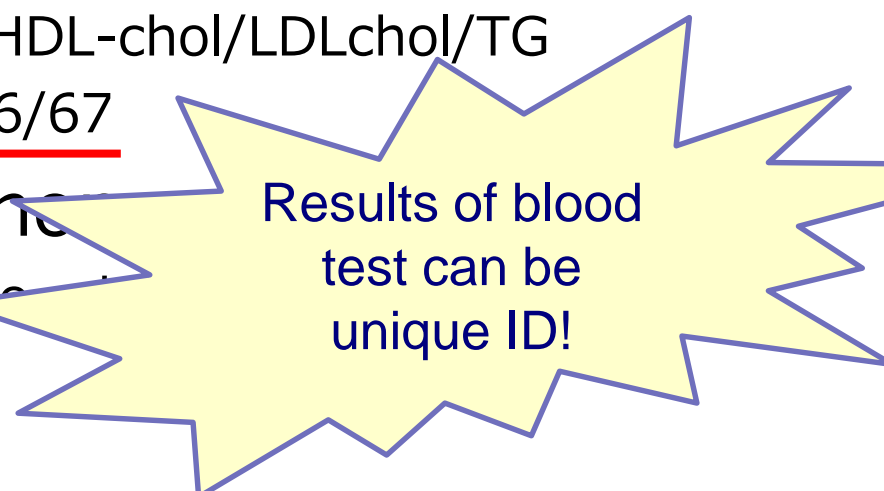
Case 1. "Under anonymity" is truly possible ?

■ Data base A: Clinical Research DB (with privacy data by patient agreement)

- ID, name, etc
- No diagnosis
- Blood test on 16th July 2009
 - AST/ALT/LDH/γGTP/t-chol/HDL-chol/LDLchol/TG
=26/33/288/43/221/56/116/67

■ Data base B: "Perfect" and

- no ID, no name, no birthday, no...
- Diagnosis : Gastric cancer
- Blood test on 16th July 2009
 - AST/ALT/LDH/γGTP/t-chol/HDL-chol/LDLchol/TG
=26/33/288/43/221/56/116/67



Results of blood
test can be
unique ID!

Case 2. Is it possible to make medical Image anonymous?



We usually present patient face with a blinker for case presentation. But nothing on chest X-ray image...
..

Case 2. Is it possible to make medical Image anonymous?

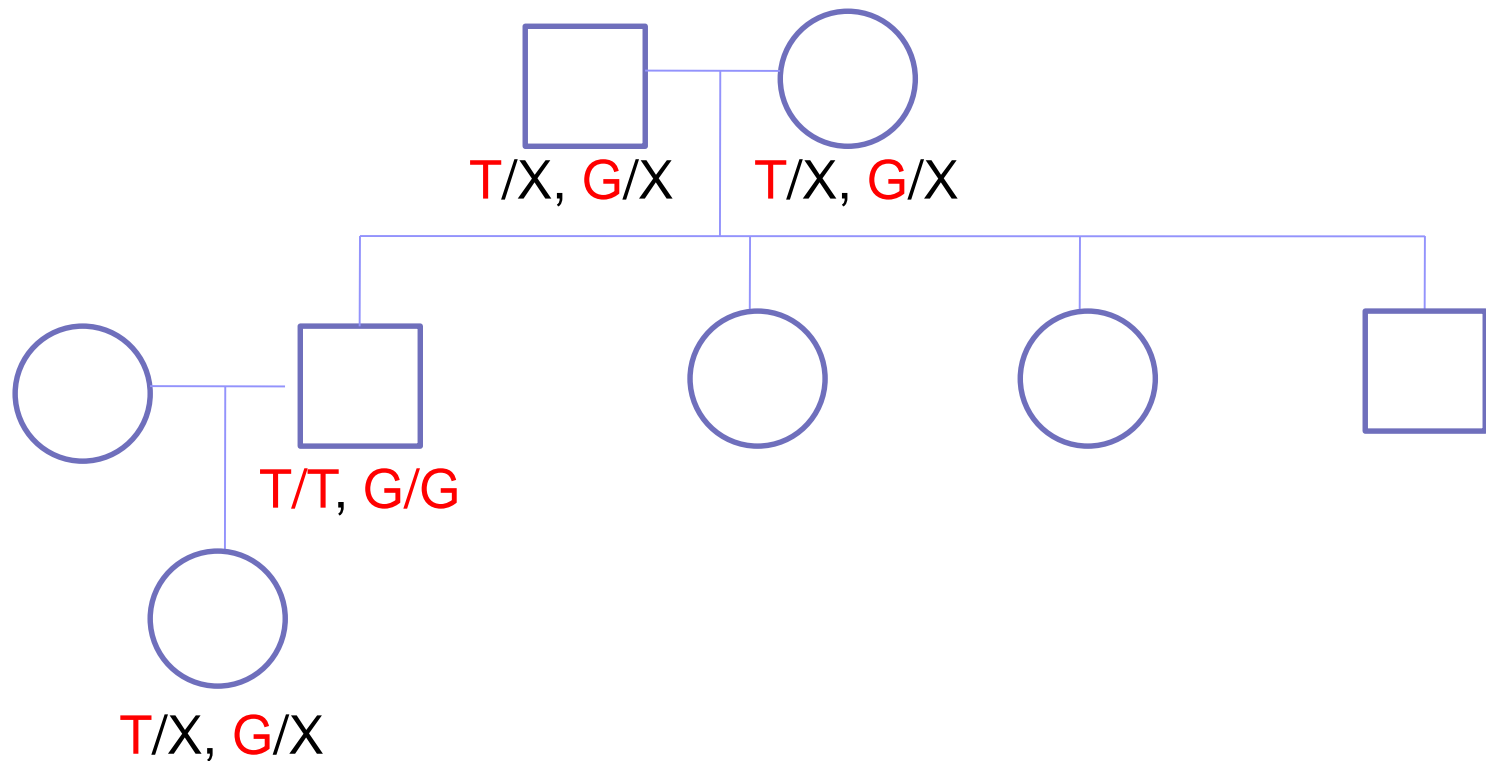


A simple pattern recognition technology easily identify a person from thousands of images!

Same to face recognition!
Your pattern is unique in the world!



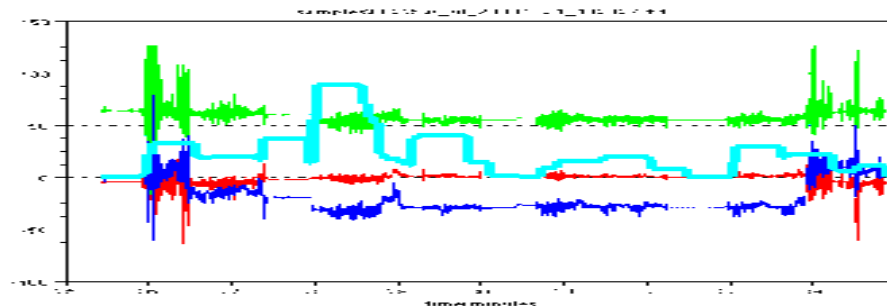
Case 3. Is Genome information a simple privacy information?



1. Genomic information should be more sensitive than a simple privacy information (it is family line information).
2. Never change during his life.

Case 4. Is security of sensor information OK?

- Information from EMR
 - Diagnosis: Lung cancer, type C hepatitis etc...
 - Prescription: Aspirin, Insulin, etc
 - Results of blood test: Blood sugar, HbA1c, etc...
- Sensor information in medical process
 - Wave data, Numerical data etc.



Data of 3 axis accelerater during rehabilitation

Case 4. Is security of sensor information OK?

Wireless + Internet Can Improve Healthcare

But not without fully understanding security and privacy



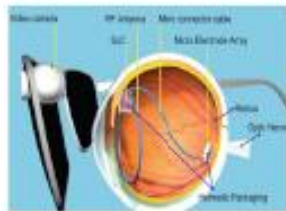
Insulin pump



Artificial pancreas



Neurostimulators



Artificial vision



Obesity control

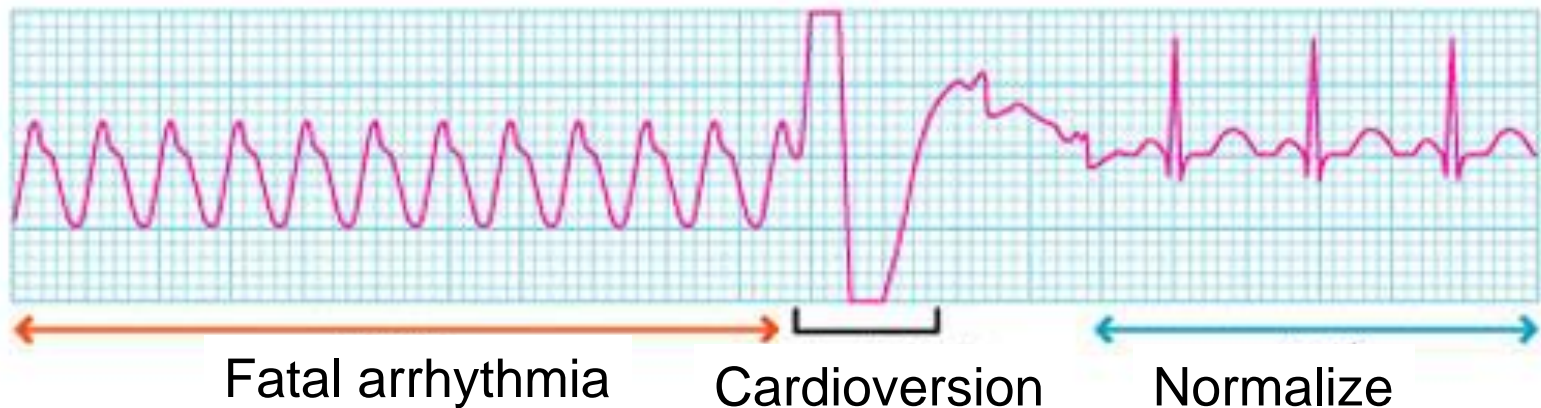
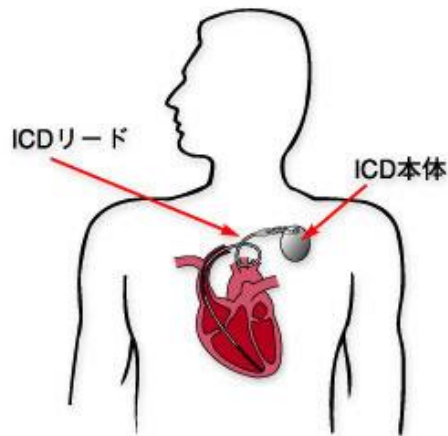


Programmable Vasectomy



Case 4. Is security of sensor information OK?

- Pace maker
- Implantable Cardioverter Defibrillator (ICD)



Case 4. Is security of sensor information OK?

■ 2008年3月12日

[HOME](#) / [NEWS](#) / [LOCAL](#) / [MASS.](#)

Heart devices vulnerable to hack attack

The Boston Globe

Researchers urge action, downplay current risks

[Email](#) | [Print](#) | [Single Page](#) | Text size  

By Carey Goldberg

Globe Staff / March 12, 2008

Warning: Not only computers are vulnerable to hack attacks. Our bodies may be, as well.

A new study demonstrates a large gap in the security of implanted devices that help regulate heartbeats and use wireless technology, researchers from Beth Israel Deaconess Medical Center, the University of Massachusetts, and

Finally computer virus kills human

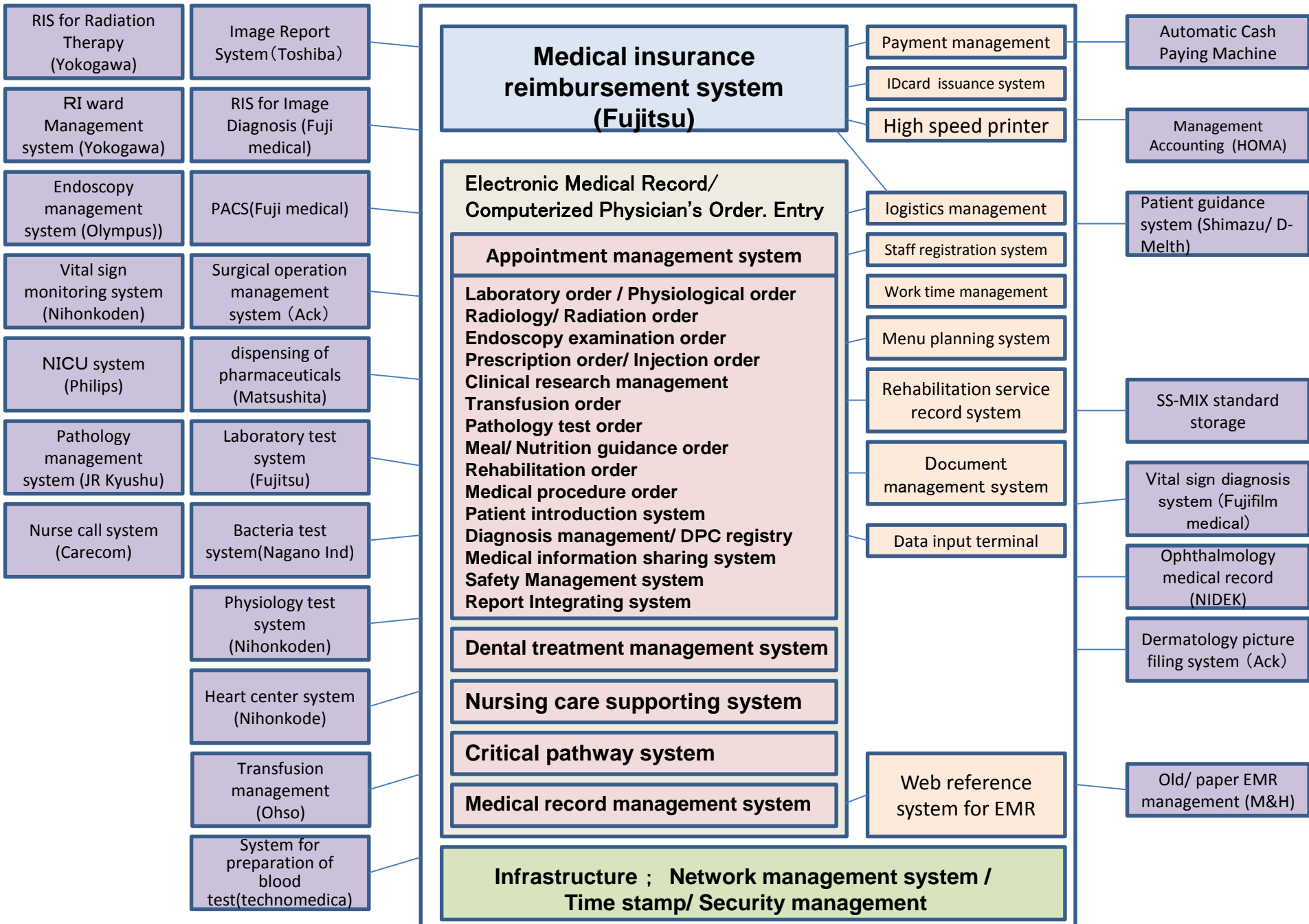




Case 5. The bigger, the better?



Hospital Information System (HIS) in Kyushu University Hospital



A bug of EMR system stopped medical service in Kanazawa university hospital (05/Jan/2015)

The screenshot shows a web browser window with the URL <http://www.hokkoku.co.jp/subpage/E20150105002.htm>. The page title is "金大病院、電子カルテなどシステム不具合 診察大幅遅れ". The article text is as follows:

01/05 16:04

金沢市の金大附属病院が5日に運用を開始した電子カルテなどの医療情報システムに不具合が生じ、同日、診察に大幅な遅れが出た。患者数の多い内科の外来受付には60人以上が列をつくり、スタッフが患者への説明に追われた。

病院によると、不具合があったのは昨年末に更新したシステム。情報をうまく入力できない状態で、医師がカルテを手書きするなどして対応した。担当者が原因を調査中だが、同日正午現在、正常化のめどは立っていないという。

特に混雑が目立った2階の内科外来は、受け付け待ちの列が隣の診療科まで達し、スタッフが整理券を配って対応した。血液内科を受診した富山市内の70代男性は「採血で2時間、診察でも30分以上待たされた」と憤った。

病院側は院内放送でシステムの不具合を説明し、総合受付などに張り紙を掲示した。金沢市内の60代男性は「1時間以上待っても採血に呼ばれなかったので病院を出た。アナウンス以外に説明がなく状況が分からなかった」と不満を口にした。七尾市の70代女性は「新年早々こんな待たされたら、しばらく病院に行きたくなくなる」と話した。


病院関係者によると、診療自体はストップしておらず、急患の受け入れ態勢などにも問題はない。同病院広報はシステムの不具合による診療遅れについて「患者に迷惑をかけ申し訳ない」としている。

Almost all medical services depend on electronic system.

MORE NEWS

デスクトップ ライブラリ nnakashima コンピューター ネットワーク 6:22 2015/01/19

Numbers of students, staffs, and patients in Kyushu Univ.

	Students; undergraduates	11,780
	postgraduates	6,942
	research students	644

■ Faculties and staffs



Faculties	2,099
staffs (non-faculty)	5,617

■ Patients with active ID for 5ys	~300,000
-----------------------------------	----------



Amount of Privacy Information in Kyushu University

■ Students; undergraduates 11,780



postgraduates 6,942

research students 644

■ Faculties and stuffs



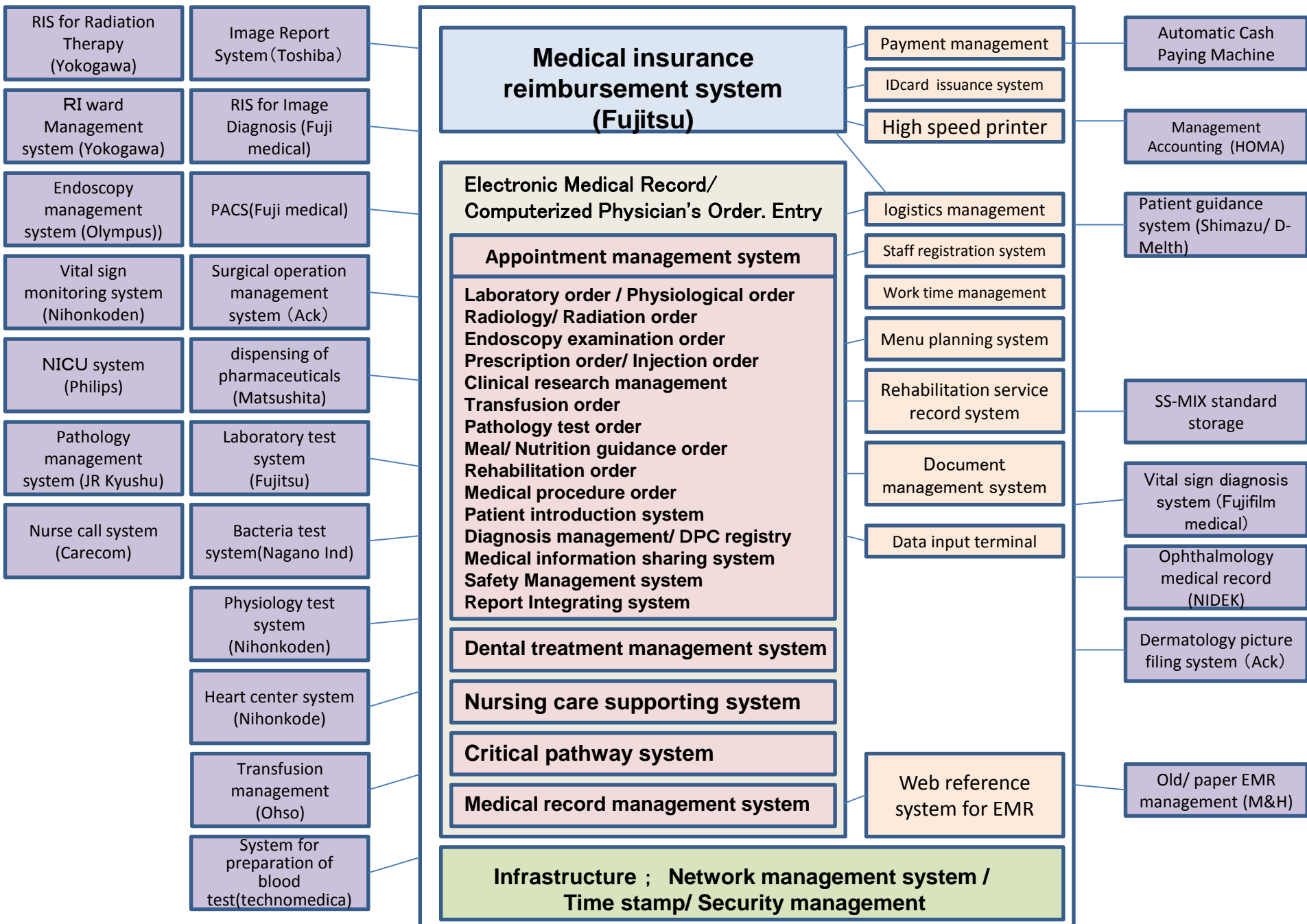
Faculties 2,099

stuffs (non-faculty) 5,617

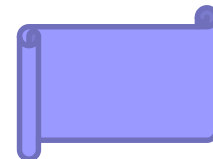
■ Patients with active ID for 5ys ~300,000



Each patient has wide-ranging and detail medical data in HIS DB



National Guidelines for medical information security



- Safety Management Guidelines for Medical Record Information (ver. 4.2)
(Ministry of Health, Labour and Welfare)
- Information Security Measures Guidelines on medical information for ASP/SaaS (ver. 1.1)
(Ministry of Internal Affairs and Communications)
- Guidelines for Information Processing Business Providers that Contract to Control Medical Information (ver. 2)
(Ministry of Economy, Trade and Industry)

Strategy of Kyushu U hospital against security risks of information

- Hospital Information system (HIS) is disconnected from Internet in principle
- (1) authenticity, (2) visual readability, and (3) storage property are ensured
- Vein authentication (Number of user IDs is 4,555)
- Data output from HIS automatically set up anonymity and encryption
- Backup server of HIS has been established in remote area for BCP purpose after "311"
- Information security policy of KU Hospital has been established in addition to the entire KU policy

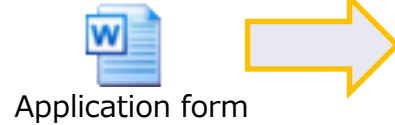
Strategy of Kyushu U hospital against security risks of information

- Hospital Information system (HIS) is disconnected from Internet in principle
- (1) authenticity, (2) visual readability, and (3) storage property are ensured
- Vein authentication (Number of user IDs is 4,555)
- Data output from HIS automatically set up anonymity and encryption
- Backup server of HIS has been established in remote area for BCP purpose after "311"
- Information security policy of KU Hospital has been established in addition to the entire KU policy

Data output rules from HIS

Before 2013

Users just asked MIC

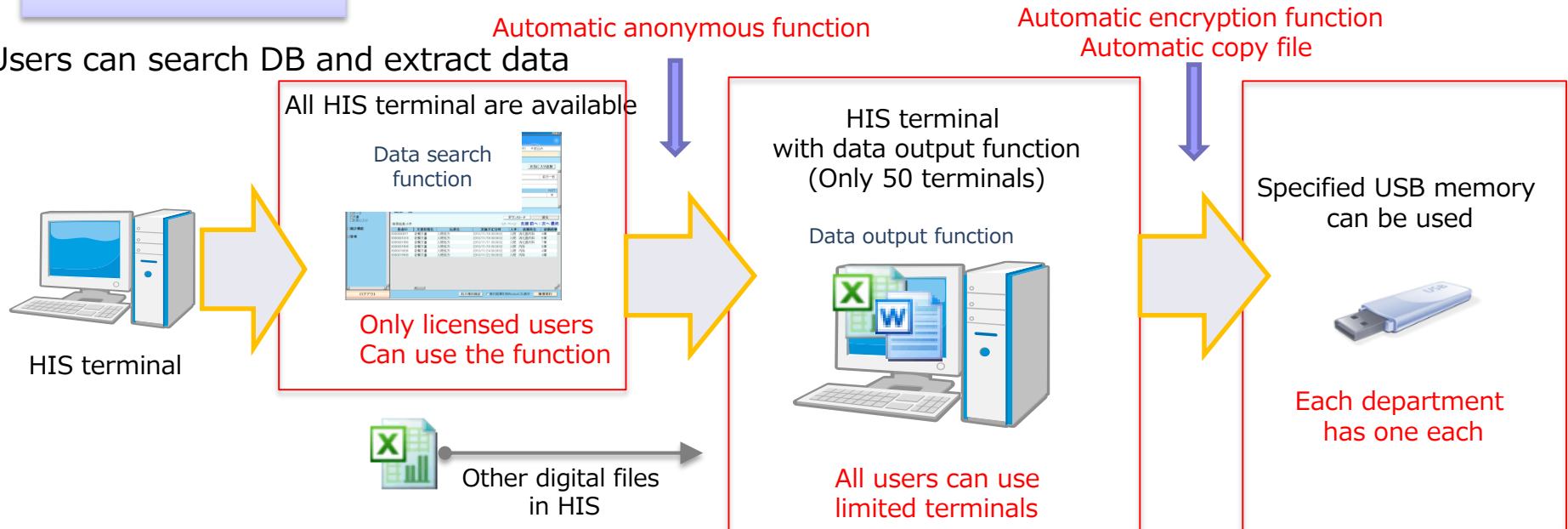


* MIC provides this service to promote data utilization and security

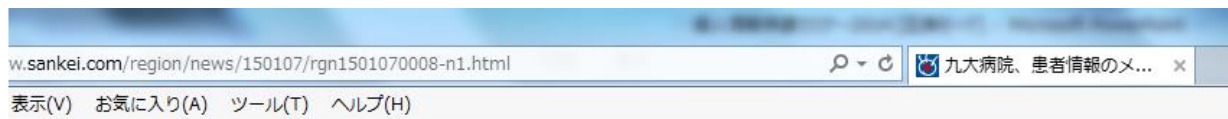
In addition to the service above,

After 2014

Users can search DB and extract data



A female MD in Kyushu University Hospital was snatched a USB memory with privacy information of 183 patients without anonymity and encryption (7th Jan 2015)



産経ニュース 東京 11°C

ホーム スポーツ エンタメ

北海道・東北 関東

福岡 大分 佐賀 長崎

Enlightenment and education are important!

4 6 歳、ミドリムシで勝ち組!?湧き出すパワーが...! [PR]
全国の移住に役立つ情報満載 JOIN 移住・交流ナビ [PR]

2015.1.7 07:08

文字の大きさ 小 中 大

九大病院、患者情報のメモリー紛失 医師がひったくりに遭う

ツイート 8 おすすめ 0 g+ 0

九州大は6日、九州大病院に勤める40代の女性医師がバッグをひったくられ、中に入っていた患者91人の個人情報記録されたUSBメモリー1個を紛失したと発表した。氏名や年齢などの情報が悪用された報告はないという。メモリーの持ち出し許可は得ていたが、データを第三者が見られないようパスワードを設定していなかった。





Summary

- We need primary/secondary use of medical information more
 - To make medical service better
 - To create next generation medical service
- Risks of Medical information
 - “Information explosion”
 - Sensitive privacy information, and confidential information
- Security Management of Medical Information is one of the essential matters in Kyushu Univ. Hospital